

Violin I.

Quartetto Svedese

Oscar Byström.

Lento. (♩ = 66)

13

21

29

36

42 (A.)

54

63

72

81 (B)

92 (C)

103

f *pp* *pp*

Allegro molto (♩ = 76)

p *f* *p*

f *p*

p *cresc.* *p*

p

cresc. *f*

p *pp*

mezza voce

pp

~ Violin I ~

112

123

131

143

156

167

180

192

202

216

227

236

poco à poco cresc.

poco ritardando.

note

pp *f* *p* *fe* *pp* *3 3 3 | 3 3 3 Sim.*

Detailed description: This is a page of a musical score for Violin I, containing measures 112 through 236. The score is written in a single system with ten staves. The key signature is one flat (B-flat major or D minor), and the time signature is 3/4. The music features a variety of dynamics, including piano (*p*), forte (*f*), fortissimo (*ff*), and pianissimo (*pp*). There are several slurs and phrasing marks throughout. Measure 180 contains a triplet of eighth notes marked with a circled 'E' and the instruction 'poco à poco cresc.'. Measure 216 shows a change in time signature from 3/4 to 2/4. Measure 236 includes the instruction 'poco ritardando.' and a 'note' marking above a specific note. The page number '2.' is in the top left corner, and the instrument name 'Violin I' is centered at the top.

~ Violin I ~

247 *f*

252 *p*

265 *f* 3 3 3 3 3 3 *p*

275 *p*

291 *ff* *ff* *ff*

303 *ff* *pp*

316 *ff* 3 3 3 *Sim.*
poco a poco cresc.

326 *ff*

335 *ff*

344 *p* *rall*

352 *ff* *a t2* 355. *Largo e lento (♩=90)*

vänd sida! →

4.

~ Violin I ~

Largo e lento (♩ = 90)

1

ppp

p

13

p. e molto sostenuto p < mf

A)

20

f ff p f

27

B)

p sostenuto

34

p

41

p mf f p

50

f p

54

f

57

f p

60

f fp fp

65

rall.

C)

f ppp mf

Detailed description: This is a page of a musical score for Violin I, measures 1 through 65. The tempo is marked 'Largo e lento' with a quarter note equal to 90 beats per minute. The score is written in a single system with a treble clef and a key signature of one flat. It features various dynamics including ppp, p, f, ff, mf, and rall. There are also performance markings such as 'sostenuto' and 'p. e molto sostenuto'. The score includes several first endings (A and B) and a third ending (C). The notation includes slurs, ties, and various articulation marks.

— Violin I —

72 *f* *tr* *p* *mf*

78 *f* *pp* *ff* *p sostenuto*

84 *p* *p*

92 *f* *rall.* *stringendo* *a tempo* *p* *tr*

100 *f* *ff* *p* *f* *ff*

106 *mf*

113 *E*)

117 *pp* *p sostenuto* *f* *molto rall.*

126 *ppp*

vänd sida!
"Intermezzo." →

Intermezzo.
Cantici Svedesi. (1695)

Minore. (♩=104)

1 *consordino*
 mf *f* *p* *f*

Luntano a piacere *Vivo*
senza sordino

10 *p* *f* *p* *pp* *pp* *f*

(vivo) *Maggiore* (♩=92)

20 *p* *f* *p*

Minore.
consordino

28 *f* *p* *rall.* *pp* *mf* *f*

37 *p* *f* *p* *f*

Luntano a piacere
senza sordino

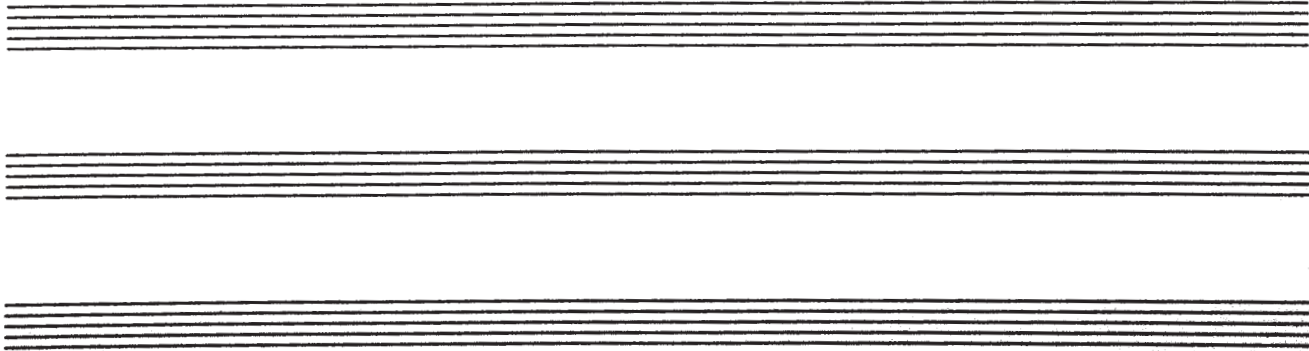
45 *p* *pp* *f*

Vivo

rall.

Attacca

52 *mf* *f* *piizz* *fortis. nãsta sida!*



Violin I

"Laetabundus" (1490)

Moderato.

57 arco mf Halle-lu-ja p

65 mf p

71 mf p

77 f p

83 mf f p

90 pp f

96 (f) rall. Lento. pp Halle-lu-ja. f

vändsida!
"Finale."

Finale.

Allegro quasi Presto (♩=88)

1 *p*

10 *fp* *A)*

19 *fp* *f* *p*

26 *f* *mf*

34 *ff* *p*

41

47 *arco.* *mf* *f* *p* *p* *pizz.*

55

62 *f* *p*

69 *pp*

72 *mf* *mf* *p*

Detailed description: This is a page of a musical score for Violin I, titled 'Finale'. The tempo is 'Allegro quasi Presto' with a metronome marking of quarter note = 88. The score consists of ten staves of music, numbered 1 through 72. The key signature has two flats (B-flat and E-flat). The dynamics range from piano (p) to fortissimo (ff). The music features various rhythmic patterns, including eighth and sixteenth notes, and rests. There are several slurs and phrasing marks. A section starting at measure 47 is marked 'arco.' and includes a 'pizz.' (pizzicato) instruction. Measure numbers 1, 10, 19, 26, 34, 41, 47, 55, 62, 69, and 72 are indicated at the beginning of their respective staves.

— Violin I —

83. *f* *p*

91. *f* *p*

97. *B.)* *f*

105. *p*

112. *p*

120. *rall.* *f* *p* *à tempo*

127. *f*

136. *pp* *f* *f*

143. *pp* *p* *f* *p* *f*

vänd sida!

Rapidamente

10.

Violin I

Meno mosso.

151 *pp*

159 *espressivo p* *risoluto f* *ff* *p*

166 *mf* *espressivo* *risoluto*

174 *p*

181 *f* *p* *(D) Tempo 1^{mo}*

188

195 *fp* *f*

202 *fp* *f* *p* *f*

210 *mf* *mf*

218 *ff* *p*

225 *pizz* *arco* *mf*

233 *p* *mf* *mf*

Detailed description: This is a page of a musical score for Violin I, numbered 10. The tempo is marked 'Meno mosso'. The score consists of ten staves of music, with measure numbers 151, 159, 166, 174, 181, 188, 195, 202, 210, 218, 225, and 233. The music is written in a single treble clef with a key signature of two flats. It features various dynamics including *pp*, *p*, *f*, *ff*, *mf*, and *fp*. Performance instructions such as *espressivo*, *risoluto*, *arco*, and *pizz* are present. A section starting at measure 181 is marked *(D) Tempo 1^{mo}*. The notation includes slurs, ties, and various note values.

Violin I

241. Musical staff 241: Treble clef, key signature of two flats, 4/4 time. Starts with a half note G4, followed by eighth notes. Dynamics: *f*, *p*, *f*. Trills are marked above the notes.

249 Musical staff 249: Treble clef, key signature of two flats, 4/4 time. Starts with a half note G4, followed by eighth notes. Dynamics: *p*, *ff*, *p*.

255 Musical staff 255: Treble clef, key signature of two flats, 4/4 time. Starts with a half note G4, followed by eighth notes. Dynamics: *f*.

264. Musical staff 264: Treble clef, key signature of two flats, 4/4 time. Starts with a half note G4, followed by eighth notes. Dynamics: *p*.

273 Musical staff 273: Treble clef, key signature of two flats, 4/4 time. Starts with a half note G4, followed by eighth notes. Dynamics: *f*.

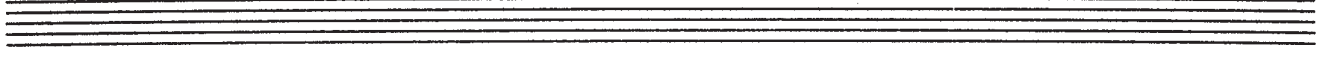
281 Musical staff 281: Treble clef, key signature of two flats, 4/4 time. Starts with a half note G4, followed by eighth notes. Dynamics: *f*.

290 Musical staff 290: Treble clef, key signature of two flats, 4/4 time. Starts with a half note G4, followed by eighth notes. Dynamics: *p*, *mf*.

299 Musical staff 299: Treble clef, key signature of two flats, 4/4 time. Starts with a half note G4, followed by eighth notes. Dynamics: *f*, *p*, *ff*.

306 Musical staff 306: Treble clef, key signature of two flats, 4/4 time. Starts with a half note G4, followed by eighth notes. Dynamics: *f*.

312 Musical staff 312: Treble clef, key signature of two flats, 4/4 time. Starts with a half note G4, followed by eighth notes. Dynamics: *ff*.



Detta är en kopia av en avskrift i biblioteket hos Mazerska
Kvartettsällskapet, till vilket kvartetten är tillägnad.